



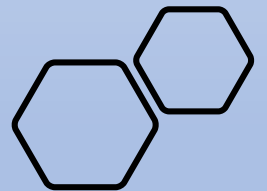
## Smart mobility & Smart City

Cities, municipalities and more generally urban areas today need a substantial modification of their structure and of the services offered. Soft mobility, on two electric wheels, must become a new lifestyle and both public administrations and private entities must commit to the development and installation of smart urban solutions.



## Promotion of the territory

- Urban environments must be useful to people by offering them services, recharging devices such as phones, tablets and similar products is today the most useful offer.
- To increase knowledge of the territories and its products, the model with side display offers the possibility of creating targeted advertising campaigns, shops, clubs and services can be viewed on the 19" display of the City plus model.





# E-bike station all-in-one services

A smart infrastructure or cycling station that offers:

- Wireless phone charging service
- Bike recharging service with dedicated 220 socket
- Charging service and electric scooters with 3 connectors for the 5 most popular models on the market
- Bicycle maintenance and repair service with tools and electric pump
- Air quality and noise monitoring sensors



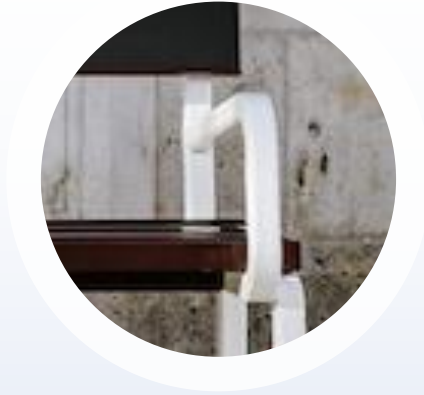


# Cycle paths & pedestrian cycle paths

Redesigning parks and squares with a single infrastructure that offers multiple services is a theme that is not easy to apply, but if we think about the usefulness of a bench, we immediately realize how many possibilities there are.

All Steora Cyclo bench models have on-board bicycle racks to make sure that any installation is also transformed into a fast stopping point



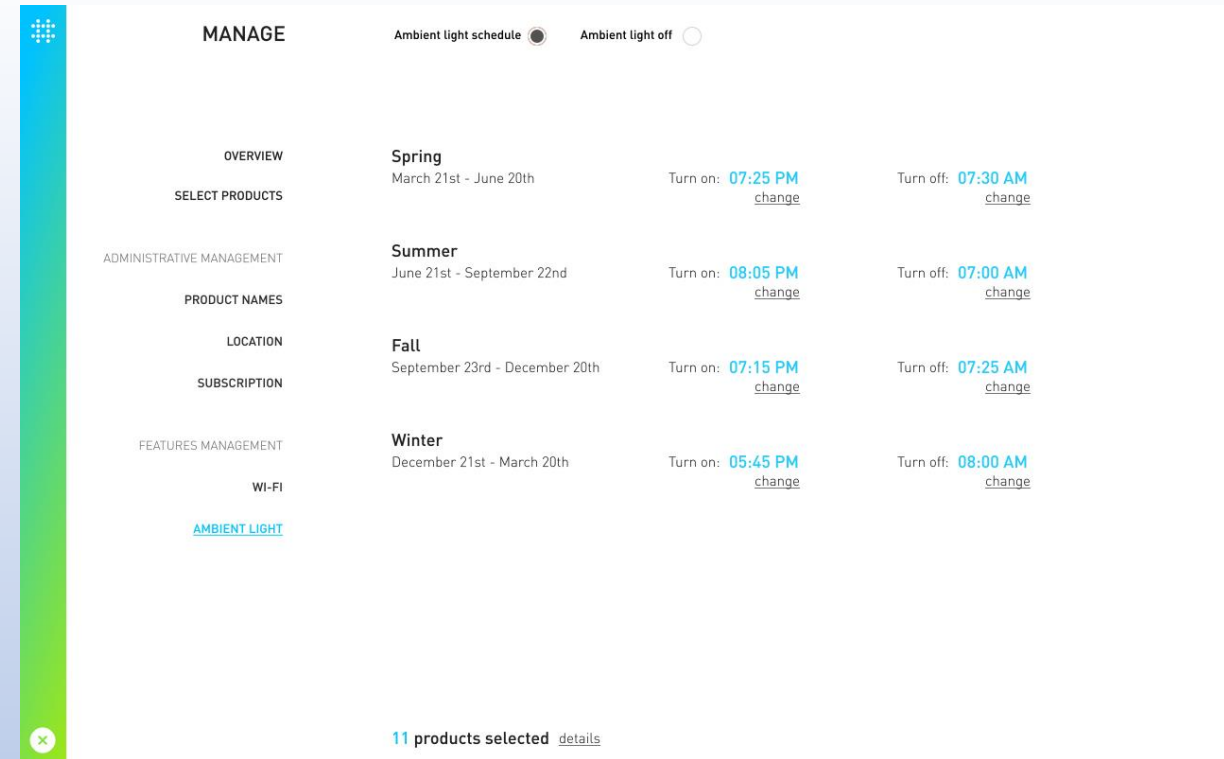
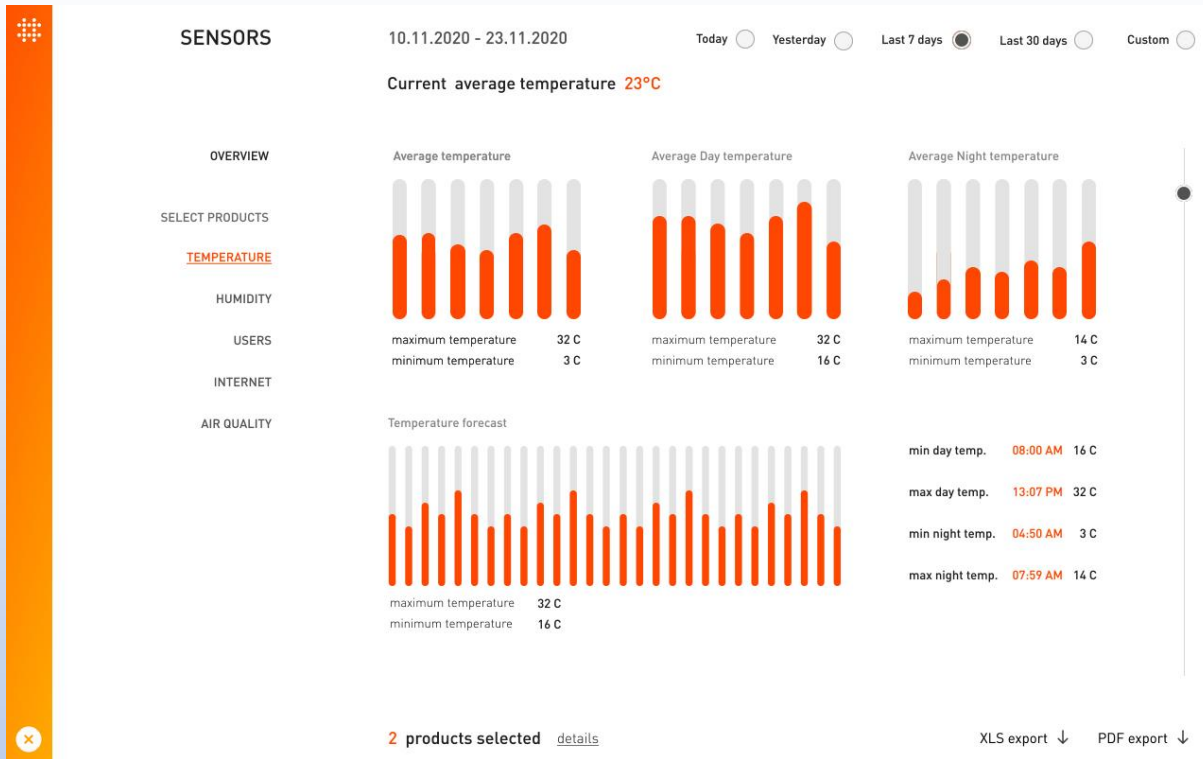


## Mountain and hill paths walks along the sea or along the lake

Often the realization of projects in areas that are not purely urban, such as along the sea, paths in the mountains or hills, presents a difficulty linked to the lack of electricity on site. Steora Cyclo is equipped with a photovoltaic panel both on the seat and on the backrest for a total of 170W of power combined with high-efficiency lithium batteries, it can therefore work even in the absence of a network, offering self-produced energy for recharging.







# REMOTE CONTROL

- Solos portal dedicated to monitor the functions and use of smart street furniture.
- IoT sensors, counters for recharging, parking, internet use
- Easy and indispensable system to demonstrate the benefits offered by smart structures.



## Etneo Italia solutions and infrastructures for Smart street furniture

Etneo Italia srl, via Giovanni  
Bovio n°6, 28100 Novara  
phone: 0321.697.200,  
mail: [alexdrappo@etneo.com](mailto:alexdrappo@etneo.com) -  
[https://www.etneo.com/smart-  
energy/?lang=en](https://www.etneo.com/smart-energy/?lang=en)

